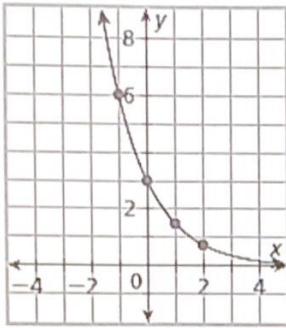


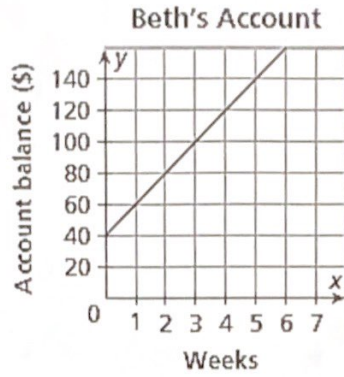
Determine if each graph represents a linear, quadratic or exponential function.

1.



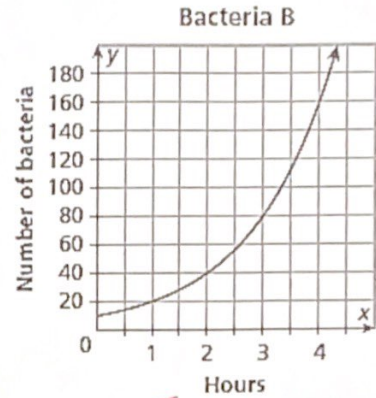
Expo

2.



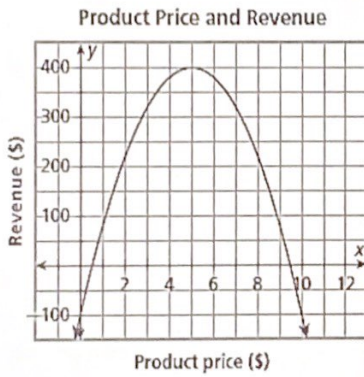
Linear

3.



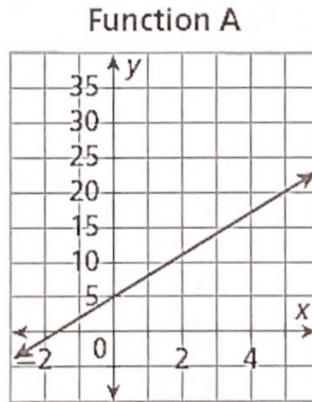
Expo

4.



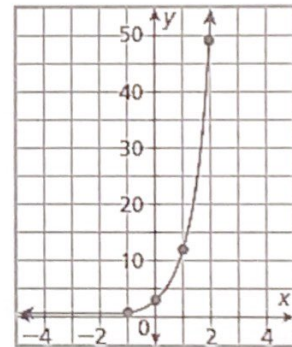
Quad

5.



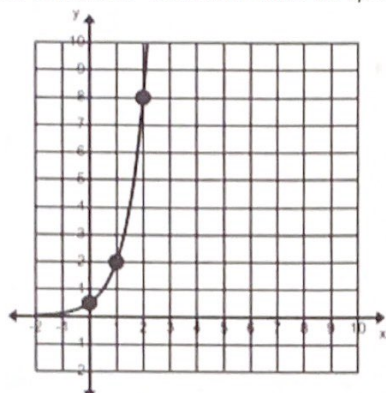
Linear

6.



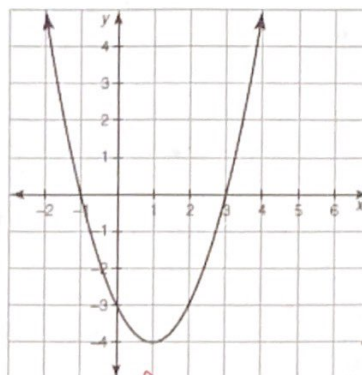
Expo

Directions: Identify the type of function. Then write an equation that represents each linear, quadratic, or exponential function. You must write all quadratic functions in standard form ($y = ax^2 + bx + c$).



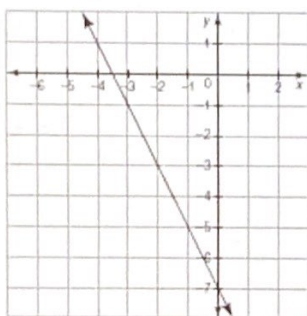
1. Type: Expo

Equation: $y = 0.5(4)^x$



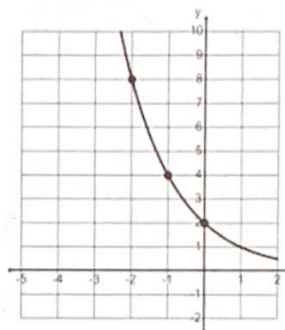
2. Type: Quad

Equation: $y = (x-1)^2 - 4$



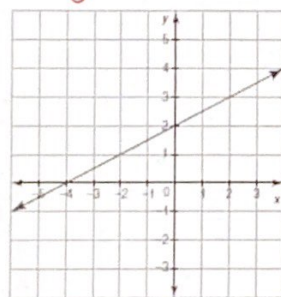
3. Type: Linear

Equation: $y = -2x - 7$



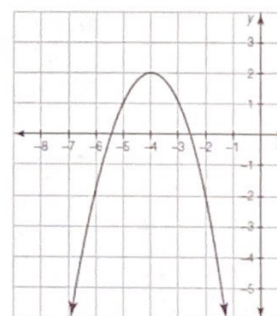
4. Type: Expo

Equation: $y = 2\left(\frac{1}{2}\right)^x$



5. Type: Linear

Equation: $y = \frac{1}{2}x + 2$



6. Type: Quad

Equation: $y = (x+4)^2 + 2$